



## PERI



### **25 METER GULET 5 AIR-CONDITIONED CABINS, 5 WC-SHOWERS**

LOA: 25.00 m

BEAM: 6.60 m

DRAFT: 2.80 m

YEAR BUILT: 2002

SAIL AREA: 380 m<sup>2</sup>

ENGINE: 2 x 210 hp Iveco Aifo

GENERATOR: Ford Aksa 30 Kwa-380V – 220V

WATER CAPACITY: 7.000 lt.

FUEL CAPACITY: 2.500 lt.

WASTE WATER: 2.500 lt.

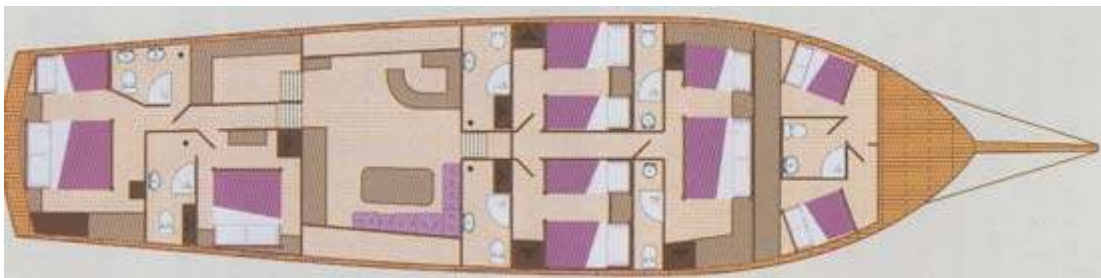
**HULL MATERIAL:** Outside Acajau Iroko, inside rose, akajau, marine plywood.

**EQUIPMENTS:** VHF, GSM telephone, Music set, CD player, TV, Radar, GPS, 4.70 dinghy with 50 hp Johnson outboard, deep freeze, oven, washing mashine, iron, sun mattresses, sun awnings, outdoor shower, bar facilities, windsurf, canoe, water ski, fishing tackle, 15 life jacket.

**ACCOMMODATION:** 5 full air-conditioned guest cabins for 12 pax (2 deluxe master (2+1) + 1 dbl + 2 twin cabins), each with private WC & showers.

Fully equipped galley, indoor/outdoor dining area separate crew quarters, sitting area on foredeck.

**CREW:** 1 Captain, 1 (cook), 1 personnel.





# Charterpartner

yachtcharter@charterpartner.com

Gulet Charter



Gulet Peri (C Charterpartner Datca 2006)



Gulet Peri (C Charterpartner Datca 2006)



Gulet Peri (C Charterpartner Datca 2006)



Gulet Peri (C Charterpartner Datca 2006)



Gulet Peri (C Charterpartner Datca 2006)



## Gulet Peri



# Charterpartner

yachtcharter@charterpartner.com

Gulet Charter



Gulet Peri - Sundeck

